

COURIER ONLINE



The Newsletter of Connecticut's Statewide
Prevention Resource Center and Library

HOW TO AVOID BECOMING A VICTIM OF CRIME



Open House

Monday, October 27, 2008
3:00 p.m.

Presentation, tours,
resources and refreshments

Please RSVP to
800.232.4424

Presented by
Tom Matthews, CEAP, CPP
Manager of Wheeler Clinic's
Employee Assistance Program
and Certified Protection Professional



First Friday Film Festival

October 3, 2008

First Friday Film Festivals are held on the first Friday of every month at
3:00 PM in the Connecticut Clearinghouse Conference Room.

New audiovisuals are screened and a discussion follows.
Join us for popcorn and a movie!

THERE'S NO PLACE LIKE HOME: GROWING UP WITH FAMILY VIOLENCE – A four-part program that examines the impact of family violence on children and the long-term effects that follow them into adulthood. Children and adults, affected by recent or long ago domestic violence, talk about their lives.

Connecticut Clearinghouse is the state's library and resource center for information on substance use and mental health disorders, prevention and health promotion, treatment and recovery, wellness and other related topics.



Connecticut Clearinghouse, a program of Wheeler Clinic, is funded by
the Connecticut Department of Mental Health and Addiction Services.





New Audiovisuals

ADOLESCENT ONSET SCHIZOPHRENIA: 1 IN 100 YOUNG PEOPLE - Adolescent-onset schizophrenia is frequently highly treatable, and young people have a good likelihood of fully regaining their lives. Learn how families can act quickly and decisively to recognize the symptoms, and be relentless in getting and maintaining the expert treatment their children need.

BEHIND CLOSED DOORS: A DOCUMENTARY - This film tells the story of four women who spent years struggling to overcome childhood abuse only to be traumatized again within the walls of psychiatric hospitals. Their journeys toward healing began when they entered a non-traditional community program that offered safety, compassion, and hope.

The Choices We Make - Addresses teen relationships, fatherhood, unintended pregnancy, and abortion.

CLINICAL DEPRESSION IN CHILDREN - Hear from two experts about how to recognize the warning signs of teen depression. Two young women share the stories of their battles with depression.

DEPRESSION AND ANTIDEPRESSANTS IN TEENS - Discusses clinical depression in teens and children. This program suggests ways to provide help, to control depression with antidepressants, and to safeguard against adverse side effects.

DEPRESSION: WHAT YOU CAN DO - Helps teenagers recognize the signs of depression in themselves and others. It dispels the myths about depression, encourages teens to talk to someone they can trust, and educates them what to say and do when around friends or family members with depression.

IF I COULD - This is a documentary film about a family's effort to escape the effects of trauma after decades of abuse, abandonment, drugs, and rage. Discusses the intervention program, VisionQuest.

IT'S NOT ABOUT THE FOOD: PREVENTING EATING DISORDERS - This program helps adults understand the nature of eating disorders among young people so they can reach out to them early, before the misuse of food spirals out of control.

MEN GET DEPRESSION - Features the stories of ten men who overcame stigma to tell about their experiences with depression. They describe how depression undermined their lives; how they learned they had a treatable disease; and how they finally found the help that made recovery possible. Viewers can choose from three programs for men of different ages: 18-30, 30-55, and 55+.

PARENTING GAY TEENS: WHAT YOU SHOULD KNOW - Explores the social, cultural and personal challenges straight parents and their kids face when the teens are gay.

PARTY - PREVENT ALCOHOL RISKS TODAY FOR YOUTH: SKITS, DISCUSSION POINTS AND FACTS ABOUT UNDERAGE DRINKING - Three skits targeting students and parents, PARTY is an excellent tool to prompt discussion among teens and parents. The open-ended questions and appropriate facts following each skit will serve to educate, to build awareness, and to modify behavior among students and parents in addressing underage drinking. Produced and acted by Connecticut students from Central, Fairfield Warde, Joel Barlow, Masuk and Trumbull High Schools.

PROBLEM GAMBLING - Dr. Nancy M. Petry discusses and illustrates her brief, cognitive-behavioral approach to treating clients with gambling problems. Her manualized approach includes handouts and homework emphasizing self-monitoring and motivation to change.

TEEN SUICIDE: THE SILENT EPIDEMIC - Provides information about detecting and preventing suicidal behavior in teenagers.

WORKING WITH MEN SURVIVORS OF TRAUMA AND ABUSE - Dr. Laura S. Brown demonstrates her approach to therapy with men who have been abused or suffered trauma in the past. In this session she works with a 30-year-old man who was physically abused as a child.

WORKING WITH WOMEN SURVIVORS OF TRAUMA AND ABUSE - Laura S. Brown, Ph.D. shows her approach to treating female clients who have been traumatized or abused. She discusses and demonstrates her approach of creating a safe environment for traumatized clients, teaching self-care, and helping clients to process and integrate the trauma.



New Pamphlets

Dual Diagnosis
and Recovery



WHEELER CLINIC
Substance Abuse and Mental Health
Services Administration

50 Things You Need to Know About STIs

50 Cosas Que Usted Debe Saber Sobre Las ITS

Alcohol & Older Adults: 10 Things You Should Know

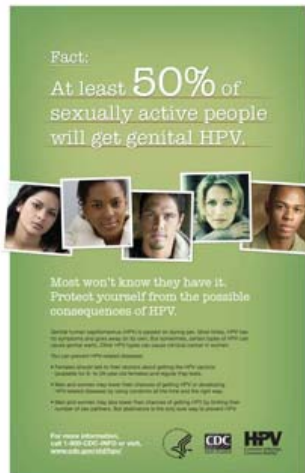
Dual Diagnosis & Recovery

Losing Weight: Being Active, Healthy Eating



New Poster

Fact: At Least 50% of Sexually Active People Will Get Genital HPV



Courier Online

The e-newsletter of
Wheeler Clinic's
Connecticut Clearinghouse

334 Farmington Avenue
Plainville, CT 06062

800.232.4424 (TTY) or 860.793.9791 (TTY)

www.ctclearinghouse.org
info@ctclearinghouse.org

Library Hours

Mon, Tues, Weds, Fri 8:30 - 5:00
Thurs 8:30 - 7:30

Connecticut Clearinghouse is funded
by the Connecticut Department of
Mental Health and Addiction Services



New Fact Sheets

Depression: Getting Help

Returning from the War Zone: Information for Families, Friends and Military Members

Tobacco Tip Sheet: Fines

Tobacco Tip Sheet for Employees

Tobacco Tip Sheet for Store Owners and Managers

Tobacco Tip Sheet: I.D.s

Tobacco Tip Sheet: Tobacco Products

Tobacco Tip Sheet: Verify the Age

Tobacco Tip Sheet: What to Do

Tobacco Tip Sheet: What to Say



SUSTAINING GRASSROOTS COMMUNITY-BASED PROGRAMS:

A TOOLKIT FOR COMMUNITY- & FAITH-BASED SERVICE PROVIDERS

This toolkit was designed to help grassroots community organizations and faith-based service providers develop and sustain program services that help people with substance use and mental health disorders. Recently published by the Substance Abuse and Mental Health Services Administration (SAMHSA,) the kit provides helpful information to guide sustainability efforts. Planning templates and worksheets on organizational assessment and readiness, effective marketing strategies, financial management, fund raising, and results-oriented evaluation are included.

The kit is free and available online at

<http://ncadistore.samhsa.gov/catalog/productDetails.aspx?ProductID=17868>